

RISK BENEFIT ASSESSMENT

Activity:	Archery	Date:	Feb 2019
Assessors:	Pete Harrison & Ben Wire	Review date:	Feb 2020

Benefits: By giving the participants the control of a weapon they have the opportunity to make good decisions in a real world dangerous situation, whilst under supervision.

Risks: See below.

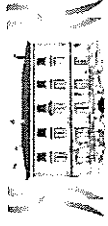
Ratios: There will be a recommended ratio of 1:15 ratio (qualified instructor/children) for the overall activity. When shooting there must a ratio of 3 archers per instructor.

Teacher's presence requested to oversee those waiting to participate. A ratio of 1:16 can be used with prior agreement from the visiting party leader and Chateau Beaumont Ltd.

Accessibility: All our instructors will ensure that medical notes for their group are checked and understood prior to the activity. All our instructors are aware of various inclusive strategies and will endeavour to meet the needs of all of our guests.

Hazard	Who is at risk	PRECAUTIONS in place to reduce the risk of injury
Equipment failure/Faulty equipment	Active participant	Weekly equipment checks by instructor holding Archery GB Instructor Award (or equivalent). Comprehensive training and assessment of instructors by Archery GB qualified instructor to ensure they know equipment is fit for each participant. Pre-session equipment and safety checks performed by instructor.
Incorrect equipment	Active participant	Comprehensive training and assessment of instructors by Archery GB qualified instructor to ensure they know equipment is fit for each participant. Regular monitoring by management and/or Archery GB qualified instructor.
Impaling	Visitors, waiting participants	Comprehensive training and assessment of instructors by Archery GB qualified instructor to ensure equipment is fit for each participant, strict adherence to NGB guidelines. Equipment locked away when not in use.
Injury - strained back, bruised wrist	Active participant	Comprehensive training and assessment of instructors by Archery GB qualified instructor to ensure equipment is fit for each participant, strict adherence to NGB guidelines
Slipping on shooting line	Active participant, instructor	Shooting line kept free from debris, dirt etc.
Person on the range	Visitors, contractors waiting participants	Good instructor control, Comprehensive training and assessment of instructors by Archery GB, Strict adherence to NGB guidelines. Warning signs on tree close to entry of range.
Arrow fired outside the range	Visitors, contractors	Good instructor control, Comprehensive training and assessment of instructors by Archery GB, Strict adherence to NGB guidelines. Session will be postponed in the case of high winds.

Sign:  Date: 7/2/19 Sign:  Date: 7/2/19



Beaumont
Château Ltd.
Mayenne, France

Chateau Beaumont Ltd

RISK BENEFIT ASSESSMENT

Activity:	Fencing	Date:	February 2019
Assessors:	Pete Harrison & Ben Wire	Review date:	February 2020

Benefits: The participants are allowed to handle and use a historic weapon and learn about the importance of safety equipment and respecting each other.

Risks: See below.

Ratios: There will be a recommended ratio of 1:15 ratio (instructor/participants) for the overall activity. A ratio of 1:16 can be used with prior agreement from the visiting party leader and Chateau Beaumont Ltd. There is a 1:8 ratio (instructor/participants) when fencing. Teacher's presence requested to oversee those waiting to participate.

Accessibility: All our instructors will ensure that medical notes for their group are checked and understood prior to the activity. All our instructors are aware of various inclusive strategies and will endeavour to meet the needs of all of our guests.

Hazard	Who is at risk	PRECAUTIONS in place to reduce the risk of injury
Equipment failure	Participants, instructor	Thorough weekly equipment checks by FALA qualified instructor. Pre-session equipment check by FALA qualified instructor.
Incorrect equipment	Participants, instructor	Session to be run by Fencing Activity Leader Award qualified instructor. Strict adherence to NGB guideline. Regular monitoring and observations by senior staff.
Slips, trips and falls	Participants, instructor	Session to be run by Fencing Activity Leader Award qualified instructor. Good instructor control. Floor kept clean and dry
Injury caused by fencing foil	Participants, instructor	Session to be run by Fencing Activity Leader Award qualified instructor. Good instructor control. Strict adherence to NGB guidelines – regarding PPE and boundary areas. Regular monitoring and observations by senior staff. Access to first aid.
Unauthorised access to equipment	Visitors, guests	Equipment kept in locked cupboard, key stored separately in main office/activity office

Pete Harrison

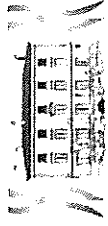
Ben Wire

Sign:

Date: 7/2/19

Sign:

Date: 7/2/19



RISK BENEFIT ASSESSMENT

Activity:	Indoor Climbing	Date:	February 2019
Assessors:	Pete Harrison & Ben Wire	Review date:	February 2020

Benefits: Participants get to challenge themselves to complete our various high ropes elements and to observe and assist others.

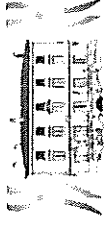
Risks: See below.

Ratios: At all times a 1:1 ratio of belayer to climber. There must be no more than 8 participants per instructor. For single climber sessions there must be no more than 15 participants per instructor. A ratio of 1:16 can be used with prior agreement from the visiting party leader & Chateau Beaumont Ltd. Teacher's presence requested to oversee those waiting to participate.

Accessibility: All our instructors will ensure that medical notes for their group are checked and understood prior to the activity. All our instructors are aware of various inclusive strategies and will endeavour to meet the needs of all of our guests.

Hazard	Who is at risk	PRECAUTIONS in place to reduce the risk of injury
Equipment falling from apparatus	Participants, instructor	Helmets worn in proximity of climbing wall. Clearly defined safety area. Pre-session visual checks of apparatus. Strict adherence to M.I.C. recommendations.
Equipment/apparatus failure	Active participant	Regular equipment and apparatus checks by senior staff. Pre-session visual checks of apparatus. Two pre-climb checks of climber and harness by instructors leading activity. Annual check by constructor (Mont Blanc) or appropriate alternative. Strict adherence to M.I.C. recommendations.
Participant falling out of ill-fitting harness. Hair/fingers caught in equipment	Active participant	Two pre-climb checks of climber and harness by instructors leading activity. Instructors trained to recognise safe and unsafe harness fittings. Hair tied back. First Aid kit in climbing barn (with scissors). Appropriate pre-session brief.
Participant hits structure/floor too hard during descent.	Active participants	All staff trained to site-specific award, designed specifically for Chateau Beaumont. Training carried out by M.I.C holder; Mountain Activities Ltd. Temporary in-house climbing qualification agreed with M.I.C. Choice of belay device – gri-gri provides assisted braking (instructors advised never to rely on this. Proper belaying technique essential). Appropriate pre-session brief (walk down the wall, do not jump). Strict adherence to M.I.C. recommendations. Continued staff appraisal and regular monitoring by member of the senior team.
Slipping on holds/wall during ascent	Active participant	Appropriate pre-session brief. Helmet fitted appropriately to protect head in event of a slip. Vigilant belaying will prevent long falls.
Unauthorised access to structure	Visiting guests/trespassers	Barn locked when not in use. Key stored in activity office.

Sign:  Date: 7/2/19 Sign:  Date: 7/2/19



Beaumont
Château Ltd.
Mayenne, France

Chateau Beaumont Ltd

RISK BENEFIT ASSESSMENT

Activity:	Initiative Exercises	Date:	February 2019
Assessors:	Pete Harrison & Ben Wire	Review date:	February 2020

Benefits: Participants gain experience of teamwork, learning through own mistakes, assisting and looking out for others and reflecting on their performance.

Risks: See below.

Ratios: There will be a recommended ratio of 1:1.5 ratio (qualified instructor/participants) for the overall activity. A ratio of 1:1.6 can be used with prior agreement from the visiting party leader and Chateau Beaumont Ltd. Teacher's presence requested to oversee those waiting to participate.

Accessibility: All our instructors will ensure that medical notes for their group are checked and understood prior to the activity. All our instructors are aware of various inclusive strategies and will endeavour to meet the needs of all of our guests.

Hazard	Who is at risk	PRECAUTIONS in place to reduce the risk of injury
Equipment failure	Participants, instructor	Thorough weekly equipment checks by senior staff. Pre-session site and equipment check by qualified instructor.
Unauthorised access to other areas adjacent to course	Participants	Session to be run by qualified instructor. Good instructor control. Activity sites clearly defined
Slips, trips and falls	Participants, instructor	Session to be run by qualified instructor. Good instructor control. First aid kit kept at site, access to qualified first aider. Regular monitoring by senior staff.
Injury caused by falling branch from trees	Participants, instructor	Tree checks carried out by qualified tree surgeon (Steve Maros). Weekly site check by Chateau Beaumont instructor.

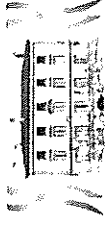
Sign: 

Date: 7/2/19

Sign:



Date: 7/2/19



Beaumont
Château Ltd.
Mayenne, France

Chateau Beaumont Ltd

RISK BENEFIT ASSESSMENT

Activity:	Nightline	Date:	February 2019
Assessors:	Pete Harrison & Ben Wire	Review date:	February 2020

Benefits: Participants learn to trust their safety to other members of their group and take responsibility for the safety of others.

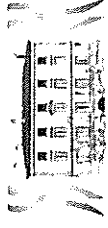
Risks: See below.

Ratios: There will be a recommended ratio of 1:15 ratio (qualified instructor/participants) for the overall activity. A ratio of 1:16 can be used with prior agreement from the visiting party leader and Chateau Beaumont Ltd. Teacher's/group leader's presence requested to oversee those waiting to participate

Accessibility: All our instructors will ensure that medical notes for their group are checked and understood prior to the activity. All our instructors are aware of various inclusive strategies and will endeavour to meet the needs of all of our guests.

Hazard	Who is at risk	PRECAUTIONS in place to reduce the risk of injury
Equipment failure	Participants, instructor	Thorough weekly equipment checks by senior staff, including walk through of the course. Pre-session equipment check and course walk through by instructor.
Unauthorised access to course	Guests, trespassers	On arrival all guests informed of boundary areas. Fenced boundary with private signs.
Slips, trips and falls. Abrasions and bruises, sprains/strains	Participants, instructor	Session to be run by qualified instructor. Good instructor control. Access to qualified first aider and first aid kit. Regular monitoring by senior staff. Strict adherence to company activity guidelines. Regular monitoring by senior staff. Warn participants of any overhanging branches.
Getting lost/separated from the group	Participants	Session to be run by qualified instructor. Good instructor control. Use of a guide rope. Strict adherence to company activity guidelines.
Debris falling from overhead	Participants, instructor	Thorough weekly site checks by senior staff and pre-session site check by instructor.

Sign:  Date: 7/2/19 Sign:  Date: 7/2/19



RISK BENEFIT ASSESSMENT

Activity:	Swimming	Date:	February 2019
Assessors:	Pete Harrison & Ben Wire	Review date:	February 2020

Benefits: Participants get to enjoy structured use of the outdoor swimming pool, with various teamwork based games and relays to play.

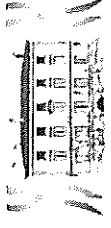
Risks: See below.

Ratios: 1:1.5. A ratio of 1:16 can be used with prior agreement from the visiting party leader & Chateau Beaumont Ltd. Teacher's presence requested to assist in overseeing participants.

Accessibility: All our instructors will ensure that medical notes for their group are checked and understood prior to the activity. All our instructors are aware of various inclusive strategies and will endeavour to meet the needs of all of our guests.

Hazard	Who is at risk	PRECAUTIONS in place to reduce the risk of injury
Drowning	Participants, instructor	Instructor training. Instructor to hold NPLQ (or French equivalent). Teachers must be present. Appropriate instructor control & observation of group. Equipment available to assist anyone in trouble. Weak swimmers identified by teacher and told to stay in shallow end of pool. First aid kit by pool.
Chemical burns to eyes/skin	Active participant	Daily pool checks (when in operation) of chemical balance and water quality. Weekly site & equipment checks.
Injuries due to falling/slipping	Active participant	Thorough explanation of rules, including no running, at the start of session. Good instructor control to manage group behaviour throughout. Teachers required to be present to assist with management of group. First aid kit by pool.
Foreign objects in pool or poolside	Active participants	Daily pool checks (when in operation) of chemical balance and water quality. Weekly site & equipment checks.
Getting too cold out of pool	Active participant	Pool open seasonally.
Sunburn	Participants, teachers, instructors	Instructor to advise use of sun cream when appropriate and covering body when out of pool for an extended period. Teachers present to help enforce (loco parentis).
Unauthorised access to pool	Visiting guests/trespassers	Gate locked when not in use. Pool covered with summer (lightweight) cover during operation, and heavier cover during non-operational months.

Sign:  Date: 7/2/19 Sign:  Date: 7/2/19



Beaumont
Château Ltd.
Mayenne, France

Chateau Beaumont Ltd

RISK BENEFIT ASSESSMENT

Activity:	Team Games	Date:	February 2019
Assessors:	Pete Harrison & Ben Wire	Review date:	February 2020

Benefits: Physical exercise, communication and team work.

Risks: See below.

Ratios: There will be a recommended ratio of 1:15 ratio (qualified instructor/participants) for the overall activity. A ratio of 1:16 can be used with prior agreement from the visiting party leader and Chateau Beaumont Ltd. Teacher's presence requested to oversee the group.

Accessibility: All our instructors will ensure that medical notes for their group are checked and understood prior to the activity. All our instructors are aware of various inclusive strategies and will endeavour to meet the needs of all of our guests.

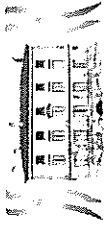
Hazard	Who is at risk	PRECAUTIONS in place to reduce the risk of injury
Collision with other participants/equipment	Participants, instructor	Strong group control. Strict adherence to company activity guidelines. Regular monitoring by senior staff. Continual assessment of activity safety by qualified instructor delivering the session.
Slips, trips and falls	Participants, instructor	Good group control. Strict adherence to company activity guidelines. Regular monitoring by senior staff, including checks of playing surface.
Harm caused by damaged equipment	Participants, instructor	Thorough weekly site & equipment checks. Pre-session visual site & equipment checks by instructor.
Medical issues/allergic reactions	Participants, instructor	Medical and allergy checks prior to session. Instructors to ensure participants or visiting staff carry any required medication. Instructor carries a radio.
Collision with Zip Wire participant	Participants, instructor	Team Games to be operated on basketball court if necessary, or at bottom of field away from zip wire area. All participants told not to go past zip fence to retrieve balls etc.

Sign: 

Date: 7/2/19

Sign: 

Date: 7/2/19



Beaumont
Château Ltd.
Mayenne, France

Chateau Beaumont Ltd

RISK BENEFIT ASSESSMENT

Activity:	Zip Wire	Date:	February 2019
Assessors:	Pete Harrison & Ben Wire	Review date:	February 2020

Benefits: Participants can challenge themselves to overcome their fears. For some, the zip wire is a unique experience.


Risks: See below.

Ratios: 2:15 ratio (qualified instructors/participants). A ratio of 2:16 can be used with prior agreement from the visiting party leader and Chateau Beaumont. 1:1 on platform and on descent from wire. Teacher's presence requested to oversee those waiting to participate.

Accessibility: All our instructors will ensure that medical notes for their group are checked and understood prior to the activity. All our instructors are aware of various inclusive strategies and will endeavour to meet the needs of all of our guests.

Hazard	Who is at risk	PRECAUTIONS in place to reduce the risk of injury
Equipment falling from apparatus	Waiting participants, instructor	Helmets worn in proximity of apparatus/clearly defined safety area. Pre-session visual checks of apparatus. Strict adherence to M.I.C. recommendations. Comprehensive instructor training and assessment by M.I.C. holder. Temporary in-house Zip Ground training procedure agreed with M.I.C holder.
Equipment/apparatus failure, participant falling from wire.	Active participant	Regular equipment and apparatus checks by senior member of staff. Pre-session visual checks of apparatus. Two pre-zip checks of participant and harness by instructors leading activity. Annual check by constructor. Strict adherence to M.I.C. recommendations. Monthly check of anchor points and bolts. <u>Maximum participant weight is 18 stone / 114.31 kgs. Refer to NQP for how to deal with this. Persons over this weight must not go down the wire.</u>
Participant falling out of ill-fitting harness. Hair/fingers caught in equipment	Active participant	Two pre-zip checks of climber and harness by instructors leading activity. Instructors trained to recognise ill-fitted harness and to correct. Chest harnesses used. Long hair tied back. First Aid kit (with scissors) and access to first aider. Appropriate pre-session brief
Onlookers/instructor struck by active participant; participant striking an object on the runway.	Onlookers, instructor	Appropriate pre-session brief which includes a clear safety area which participants/onlookers must remain in. Helmets worn in proximity of apparatus. Instructors check the runway and communicate whether clear before each launch.
Participant slipping whilst climbing rope ladder	Participant	Participant attached to ALF Fall Arrest Block; instructors trained in releasing block if participant cannot reach the rope ladder to self-release. ALF checked at the beginning of each day. If near the bottom of the rope ladder they may tumble and the ALF may not arrest as they are not falling dynamically enough for it to engage. They are, however, caught in the ladder.
Slipping on platform/instructor slipping off or being pulled off the platform	Active participant	Participants ascend the rope ladder and connected immediately to platform anchor. Grip matting is available on the platform if wet. Instructors attach participants to the platform anchor before removing the ALF and attach to the Zip Wire before removing attachment to the platform anchor.
Participant unable to descend.	Active participant	Participant may climb down the rope ladder attached to the ALF.
Unauthorised access to structure	Visiting guests	Zip Wire inaccessible without use of cargo net, which is raised to prevent access when not in use.

Sign:  Date: 7/2/19

Sign:  Date: 7/2/19